

Installation Guide of GL2K

System Requirements

1. Hardware Requirements
 - a) PC with Pentium class processor
 - b) 64MB of RAM; 128MB or higher is recommended
 - c) 50MB of available hard disk space for typical installation
 - d) CD-Rom drive
 - e) Super VGA or higher resolution monitor is recommended
 - f) Microsoft Mouse or compatible pointing device
 - g) Printer : Windows95/98/ME/NT/2000/XP compatible
2. Operating Platform
 - a) Operating System : Microsoft Windows 98 or later; Microsoft Windows NT with Service Pack 6 or later; Windows 2000 with Service Pack 1 or Windows XP
 - b) Network System : Novell Netware 3.12 or above or Microsoft Network

Installing GL2K

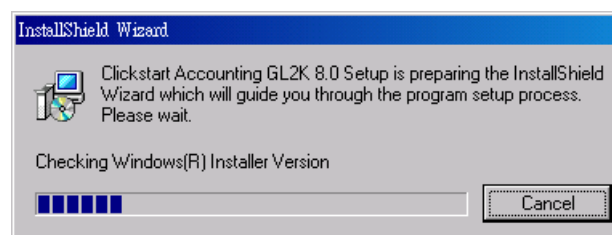
The following instructions explain how to perform a standard installation of GL2K.

Note: You must first remove any previously installed GL2K on your system before you can install GL2K again. In other words, you cannot install 2 or more copies of GL2K on the same machine.

Step 1 Turn on your computer and start Windows.

Step 2 Place your GL2K installation CD into the CD-Rom drive and select the language version of GL2K. Different language version will affect only the installation process and the selection of sample Chart of Accounts. That is English version will show only English version sample Chart of Accounts, but Traditional and Simplified Chinese version will have both English and Chinese versions.

GL2K will then start the InstallShield Wizard.



Step 3 Follow the onscreen instructions and click “NEXT”.

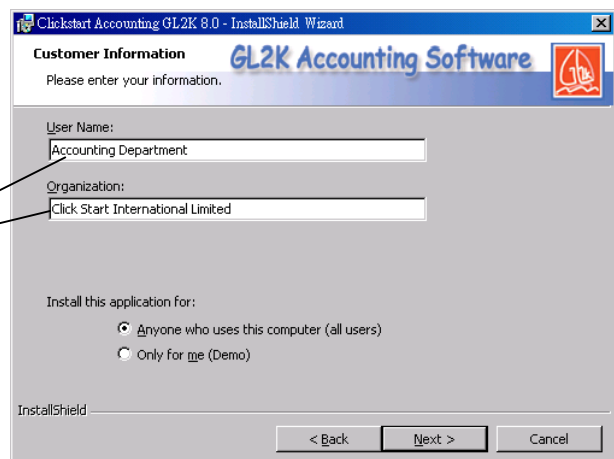


Step 4 Read the Licensing Agreement carefully (the full version is attached in the GL2K Accounting package), select the “I ACCEPT THE TERMS IN THE LICENSE AGREEMENT” option button to proceed.

Attention

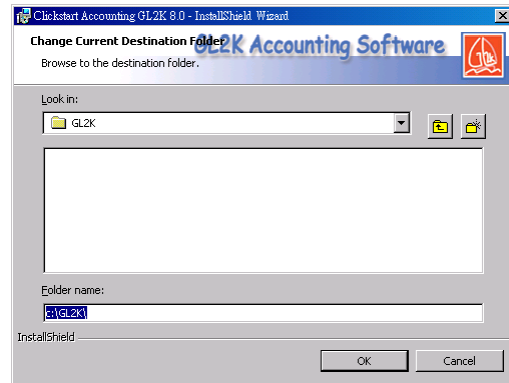
If you do not accept the agreement, you cannot proceed to the next step!

Step 5 Enter your User Name and Organization and click “NEXT”.

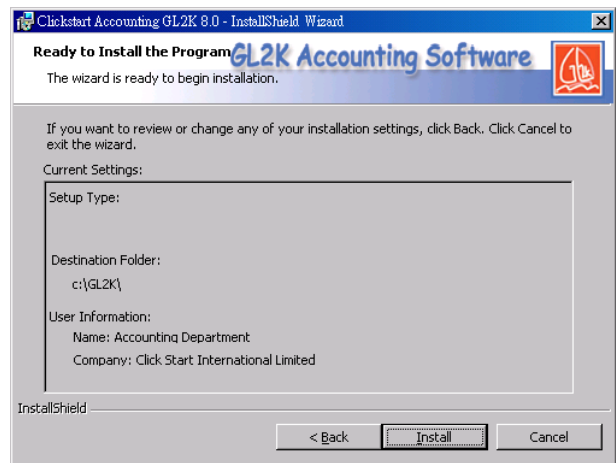




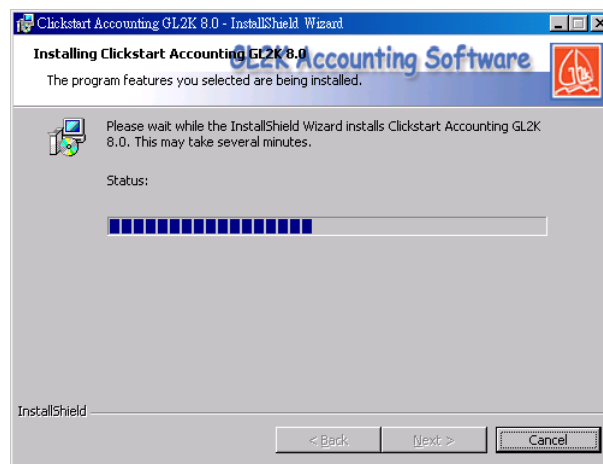
Step 6 Change the program folder only if necessary.



Step 7 Confirm all the details are correct and click "INSTALL" to begin installation.



Step 8 GL2K will start the installation process.



A final window appears to indicate the successful completion of installation. Click "FINISH" to quit the InstallShield Wizard.